



8-day Self-guided Motorcycle Tour of Canada's Chinook Country.

8-day Self-guided Motorcycle Tour of Canada's Chinook Country.

durada

8 días

Language

en

dificultat

Normal-Hard

guia

No

Vehicle de suport

No

Experience Western Canada on this 8-day self-guided tour of Southern Alberta & British Columbia, which gives you a close-up view of beautiful scenery ranging from rolling prairie to rugged mountains. Imagine riding through the rugged Canadian Rockies, rolling foot hills, endless northern forests, while enjoying great roads ranging from gentle sweeping corners to twisty sections intermixed with fantastic scenery.

Beginning & ending in Calgary AB. The roads in AB & BC are in good condition with light traffic outside of the cities. Other than road repairs you will not be required to ride on any unsealed roads.

This tour is suitable for Intermediate or Advanced riders only. Tight corners with high elevations require close attention to detail. Note: Canada drivers, drive on the right-hand side of the road.

- Due to winding roads, low km. days in Western Canada can still be long.

This exciting tour includes 7 nights' accommodation ranging from modest cabins to deluxe quality hotels.

Tour Highlights: (**Optional on Self-Guided tours)

- **Experience Native culture with a visit to the Head-Smashed-In Buffalo Jump interpretive center,
- **Visit an RCMP Fort/Museum,
- See Canada's majestic wildlife up close as you tour some of the finest natural parks in the country,
- **Enjoy thermal hot pools,

Use your own motorcycle or rent one of our touring motorcycles, which are licensed, safety inspected and verified by the state government.

A valid Passport along with appropriate approval is required for entry into Canada. A current Driver License from your country of residence is required for motorcycle rental.







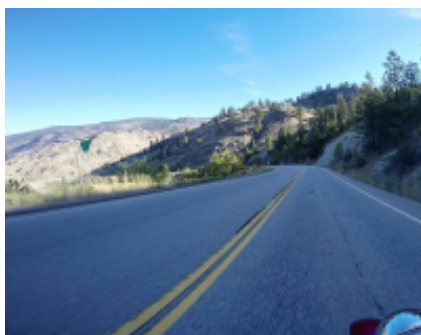
1 - - - 25

Day #1 Shuttle from airport to hotel 8 km / 5 mi (Approx. 0:30 hrs. riding)
After arriving at Calgary International Airport, you'll be met at the airport and shuttled to your hotel to check in and then to pick up your bike. Today is set aside to allow you to settle in and rest up before the adventure begins tomorrow.



2 - - - 430

Day #2 Calgary to Waterton NP 435 km. / 270 mi (Approx. 5:50 hrs. riding)
Leaving your hotel and the city behind you, you will head out into the foothills that run south alongside the Rocky Mountains. Stopping for breaks and lunch on the way will allow you to settle into the tour and grab some photos of the amazing scenery. The roads are in good condition and along the way you will enjoy optional stops to visit an RCMP fort/Museum and interpretive center showing how the early inhabitants of the prairies lived. The ride will end at the peaceful mountain town of Waterton [entrance fee required] for the night, where you are surrounded by mountains and wildlife.



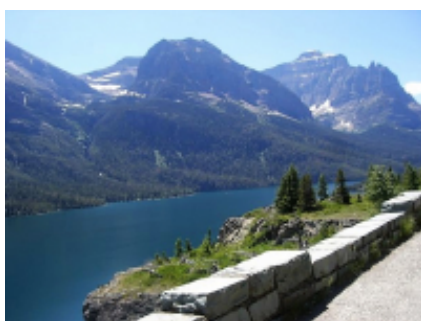
3 - - - 269

Day #3 Waterton NP to Nelson 500 km. / 310 mi (Approx. 7:15 hrs. riding)
After a western breakfast, you will ride into the mountains on well-maintained roads, alongside clear lakes, with trees down to the edge of the roads in places. As you climb higher the mountains become more rugged. Crossing a mountain lake by ferry brings you to your stop for the night.



4 - - - 392

Day #4 Nelson to Kelowna 390 km. / 245 mi (Approx. 5:35 hrs. riding) Today will take you on some wild roads, through wide open mountain countryside. This is "big sky" country where you can see forever, while enjoying the ride. Tight turns take you down into lake country and up to mountain meadows. Today is a wild ride from start to finish, with lots of photo stops.



5 - - - 0

Day #5—Rest Day Today is a free day for you to catch up on all those important things like sorting out photos, writing down all the key points of your tour so far, and even getting that pesky laundry taken care of. Maybe enjoy exploring the local area.

6 - - - 462

Day #6 Kelowna to Radium Hot Spring 470 km. / 290 mi (Approx. 5:50 hrs. riding) Head out in the clear morning and ride north and then east to follow the main Trans-Canada Hwy. for a while through lush mountain forests before turning south before stopping for the night in a sleepy mountain town. An optional soak in the hot pools followed by a relaxing dinner ends a great day.



7 - - - 309

Day #7 Radium Hot Springs to Calgary 315 km. / 200 mi (Approx. 4:00 hrs. riding) Leaving town and heading east takes you into world famous Banff National Park [entrance fee required] towards the township of Banff. Stops along the way showcase these massive mountains and put you in the center of one of the most beautiful parts of the Canadian Rocky's. This is a low mileage day; however, with the numerous stops made, it is a full day. Leaving the park and following the Hwy, brings you back into Calgary for your stop for the day. After dropping off your bikes, shuttle to your hotel for the night.



8 - - - 0

Day #8 Shuttle from hotel to airport After a relaxing breakfast, you will catch your shuttle to the airport. This shuttle ride is filled with talk about the adventure you've just had and the fun experienced. Now is the time to start planning your next Pohutukawa Motorcycle Tour. Maybe New Zealand. If you want to stay on for additional nights that can be arranged.



G 650 GS Twin
+ \$1,078.58



Road King Street Classic Class
+ \$1,078.58



Sportster 1200
+ \$0.00



Road Glide Ultra Grand Touring Class
+ \$1,078.58



XV 950 Bolt
+ \$1,078.58



Street Glide Special
+ \$1,078.58



Duke 390
+ \$0.00



Africa Twin CRF 1000 L
+ \$1,849.00



Fat Boy
+ \$1,078.58



Tiger 800 XRX
+ \$1,078.58



Road Glide Special Street Touring Class
+ \$1,078.58



Scout Sixty
+ \$1,078.58



Street Triple 675
+ \$1,078.58



Heritage Softail Cruiser Touring Class
+ \$1,078.58



Sport Glide
+ \$1,078.58

2 persones, 1 moto en
habitació doble

2 persones, 2 motos en
habitació doble

A 1 persona, 1 moto en
habitació individual

01-Jun-2026 -
26-Sep-2026

\$5,184.89

\$6,941.44

\$8,913.70

Inclòs



hotel



Impostos locals



Mapes & Road Book



Moto de lloguer

no inclòs



guia



Vehicle de suport



Begudes AMB Alcohol



Assegurança bàsica



esmorzar



dipòsit fiança



sopar



Equip protecció Enduro



Equip fred extrem



Ferris



vols



dinar



mecànic



Devolució moto en
origen



Entrades Parcs Nacionals



Begudes SENSE Alcohol
Aigua - Cafè



On route snacks



Aparcament



Gasolina & oli



Foto - Vídeo record



Moto de recanvi



propines



Trasllat



visats

Una altra informació

Despeses de cancel·lació

Important notice, in case of cancellation:

The flight tickets, supplements and optional services subscribed in this tour regardless of the basic program, are subject to 100% of early cancellation costs.